

Activity



Knitted bauble pattern

To make this knitted bauble you will need

Small amounts of 4ply yarn from your stash:

Yarn A White

Yarn B Red

A pair of 3mm knitting needles

Toy stuffing

Tension: Yarn used knits as 4ply to this tension: 28 sts and 36 rows to measure 10x10cm (4x4in) over stocking stitch using 3mm needles.

Abbreviations

* = work instructions immediately following *, then repeat as directed

alt = alternate

k(1)tbl = knit (1) into back loop

k2tog = knit the next two stitches together

kfb = knit into front and back of stitch

pssso = pass slipped stitch(es) over

rep(s) = repeat(s)

sl = slip

tog = together

WS = wrong side



Activity



Knitted bauble pattern

Cast on 12 sts using 3mm needles and Yarn A. (Note: If you are knitting your bauble using Charts B or C then you should start with Yarn B (Red) instead of Yarn A (White) – reversing the colourway from Chart A.)

Row 1 and every alt row (WS) Purl.

Row 2 *Kfb, K1, kfb; rep from * 3 more times. [20 sts]

Row 4 *Kfb, K3, kfb; rep from * 3 more times. [28 sts]

Row 6 *Kfb, K5, kfb; rep from * 3 more times. [36 sts]

Row 8 *Kfb, K7, kfb; rep from * 3 more times. [44 sts]

Row 10 *Kfb, K9, kfb; rep from * 3 more times. [52 sts]

Row 12 *Kfb, K11, kfb; rep from * 3 more times. [60 sts]

Row 14 *Kfb, K13, kfb; rep from * 3 more times. [68 sts]

Work Row 1 of Chart A, B or C (below), repeating the 17 st patt 4 times. Cont working Chart as set until all 17 rows of Chart are complete.

Break Yarn B and cont in Yarn A only.

Row 1 (RS) *Sl1, K1, pssso, K13, k2tog; rep from * 3 more times. [60 sts]

Row 2 and every alt row (WS) Purl.

Row 3 *Sl1, K1, pssso, K11, k2tog; rep from * 3 more times. [52 sts]

Row 5 *Sl1, K1, pssso, K9, k2tog; rep from * 3 more times. [44 sts]

Row 7 *Sl1, K1, pssso, K7, k2tog; rep from * 3 more times. [36 sts]

Row 9 *Sl1, K1, pssso, K5, k2tog; rep from * 3 more times. [28 sts]

Row 11 *Sl1, K1, pssso, K3, k2tog; rep from * 3 more times. [20 sts]

Row 13 *Sl1, K1, pssso, K1, k2tog; rep from * 3 more times. [12 sts]

Cast off.

With RS facing, sew up the seam until about half way. Turn RS out and stuff. Sew the seam closed.

Chart A

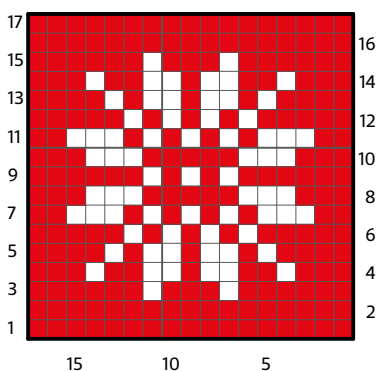


Chart B

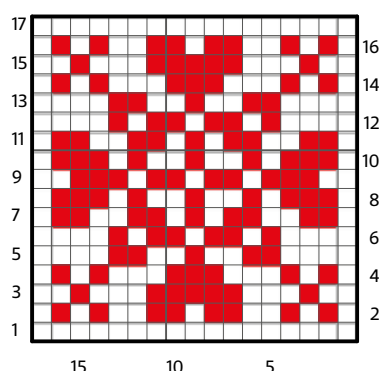
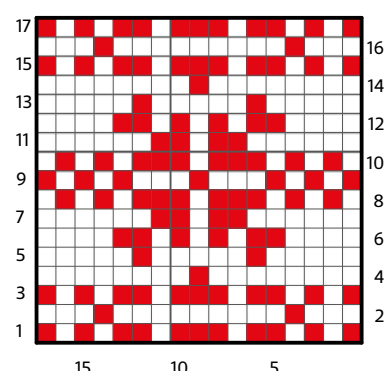


Chart C



Key □ K on RS; P on WS in Yarn A ■ K on RS; P on WS in Yarn B